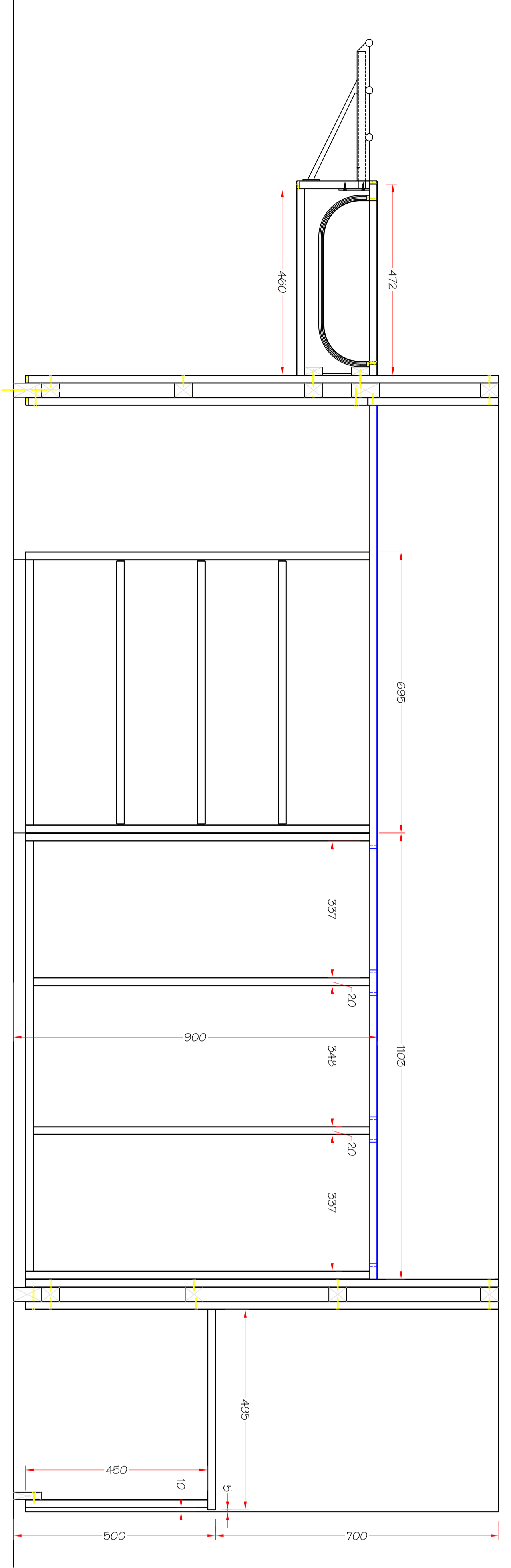
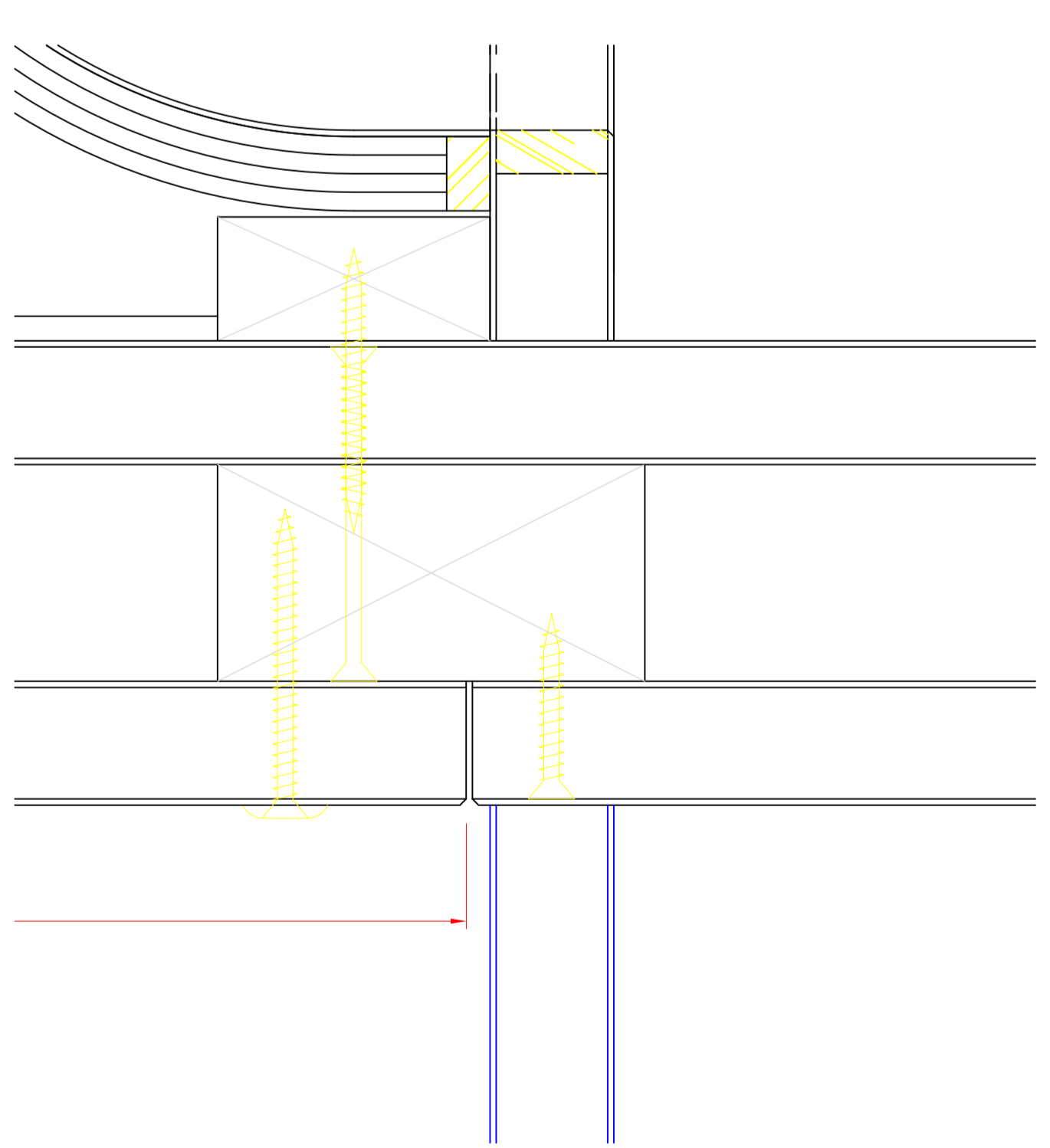


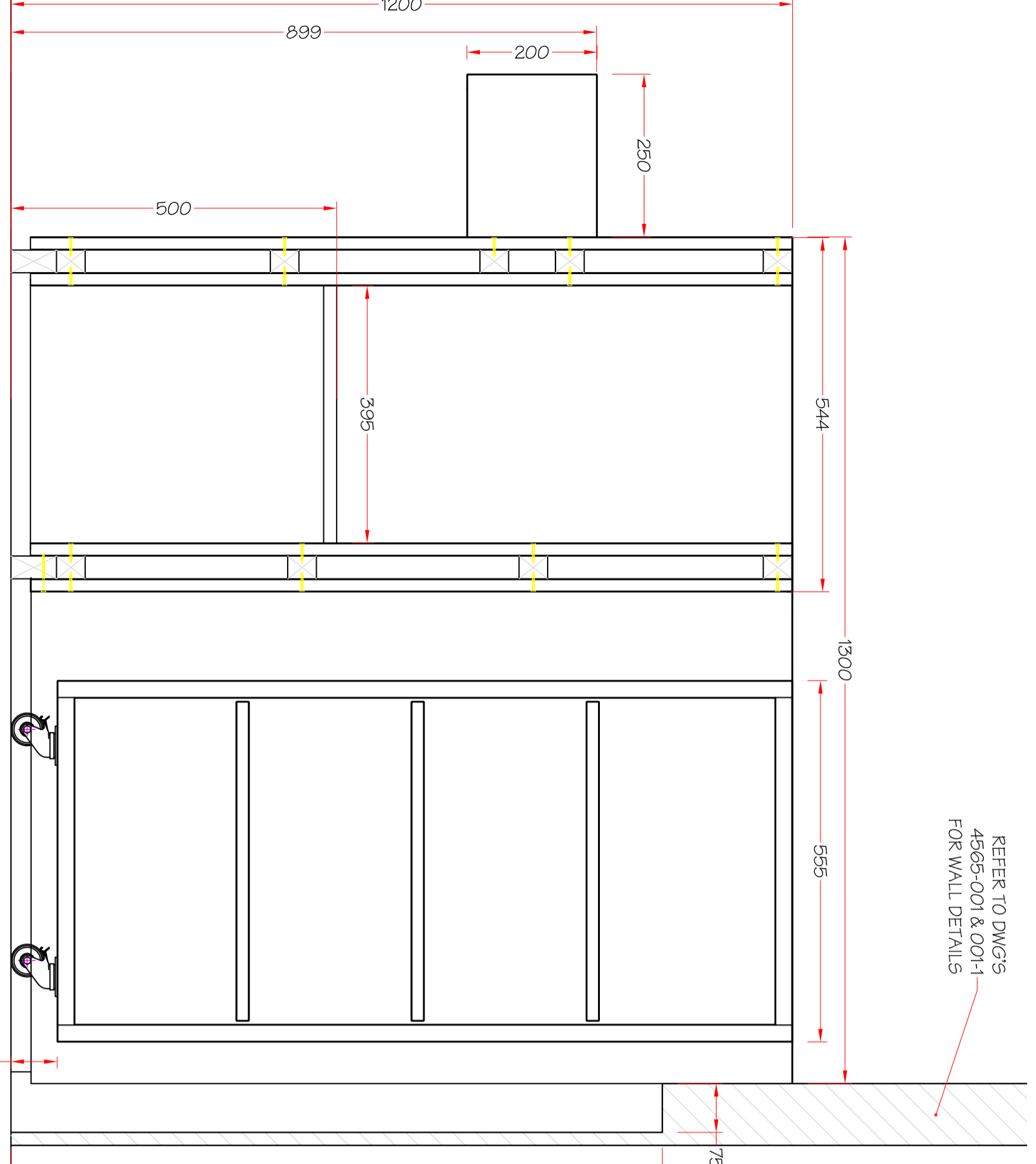
1:8 ELEVATION 'AA'



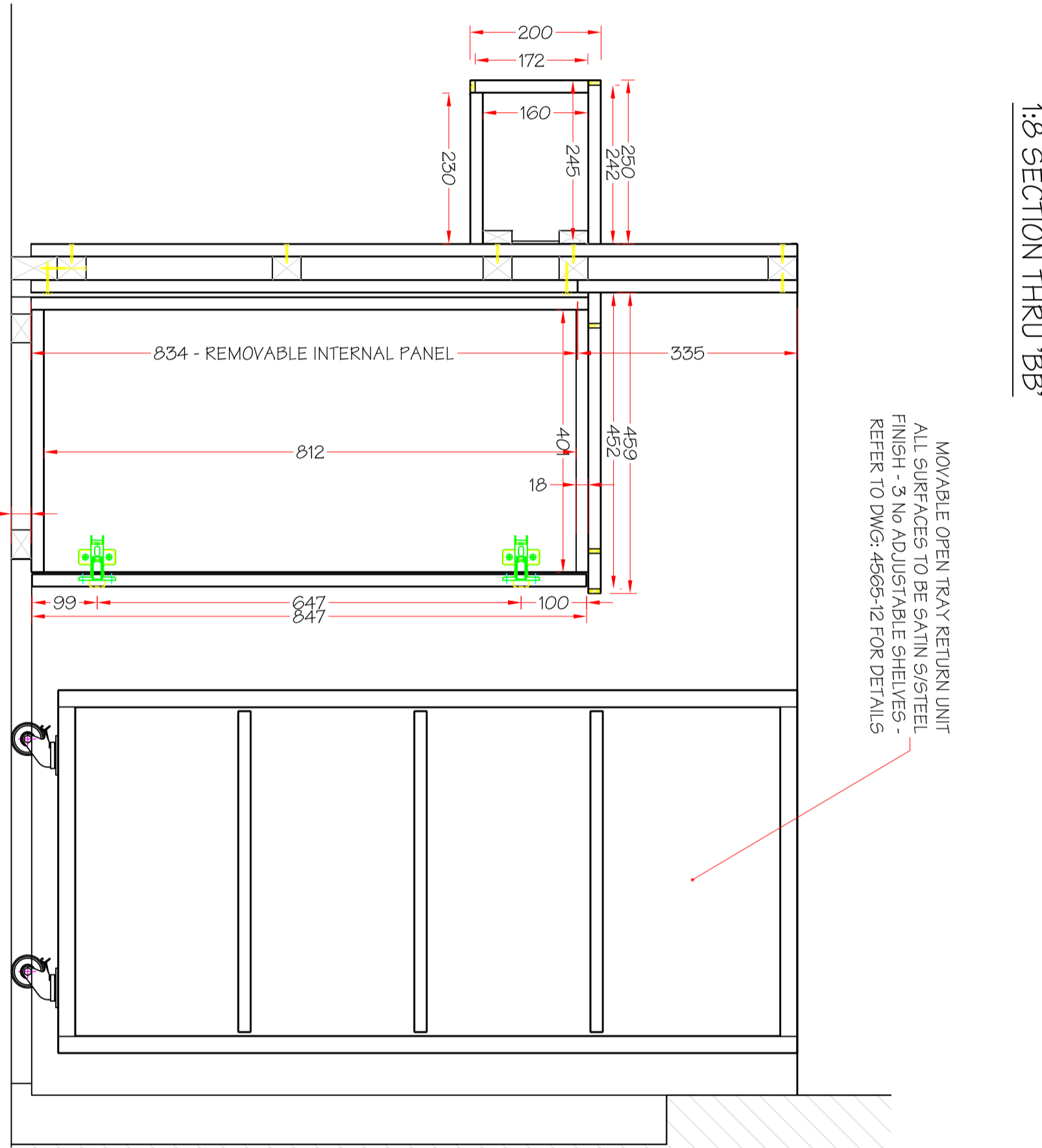
1:8 SECTION THRU 'BB'



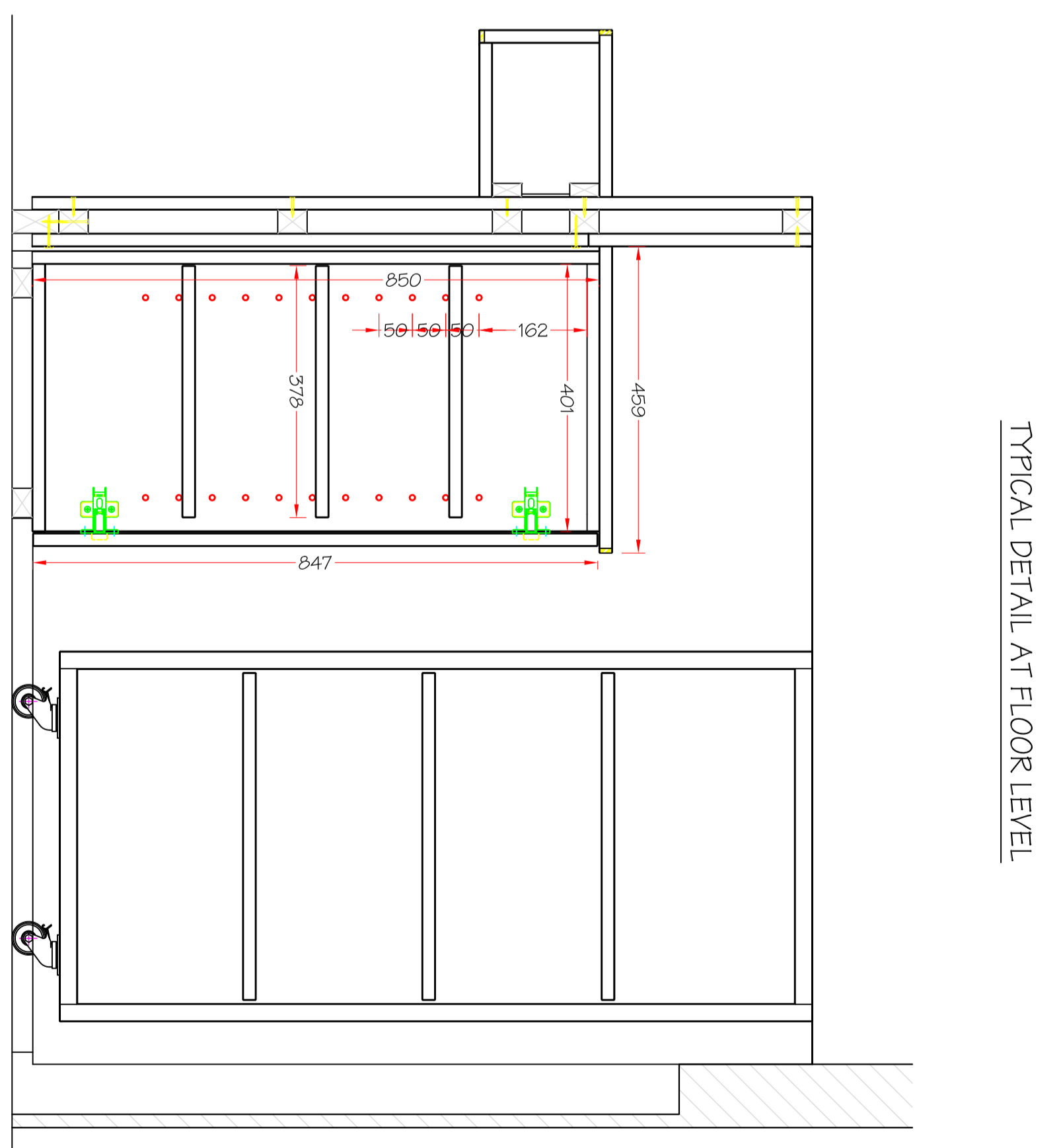
TYPICAL DETAIL AT FLOOR LEVEL



1:8 ELEVATION 'CC'



1:8 SECTION THRU 'DD'



1:8 SECTION THRU 'EE'

REFER TO DWGS 4565-001 & 001-1 FOR WALL DETAILS

MOVABLE OPEN TRAY RETURN UNIT ALL SURFACES TO BE SAINI S/STEEL FINISH - NO ADJUSTABLE SHELFES - REFER TO DWG 4565-012 FOR DETAILS

70 X 25mm S/W BATTEN SCREWED TO FLOOR VENERED WALL FIXED TO BATTEN & INTERNAL PANEL FACE FIXED TO WALL ON SITE

DARK GREY PAINT FINISH TO PLINTHS

NOTES

DRAFT ISSUE FOR COMMENT

C	TRAY STAND AREA IMPROVED BY GOING TO 107/03 ACCOMMODATE TRAYS COMPLETED SIZE 485X385mm	2005
B	SYSTEM TRAY STAND AMENDED TO REPLICATE FINISH ON SITE	01/03 2005
A	COMMENT 'ROGERS & S/STEEL TRAY REST' ALTERED AS DISCUSSED	02/02 2005

PROJECT DIGBY TROUT RESTAURANTS SCIENCE MUSEUM GALLERY 5	
JOINERY REF	SCALE AS SHOWN
DATE	DRAWN: CDB CHECKED:
TITLE CONDIMENTS / WAITER STATION & TRAY UNIT ELEVATIONS & SECTIONS	
DRAWING NUMBER 4565-07	REVISION C